

BENJAMIN

EXPLODED VIEW

MODEL BABPNBX

Benjamin Pioneer Airbow



Manufacture Start Dates: 4/15/16

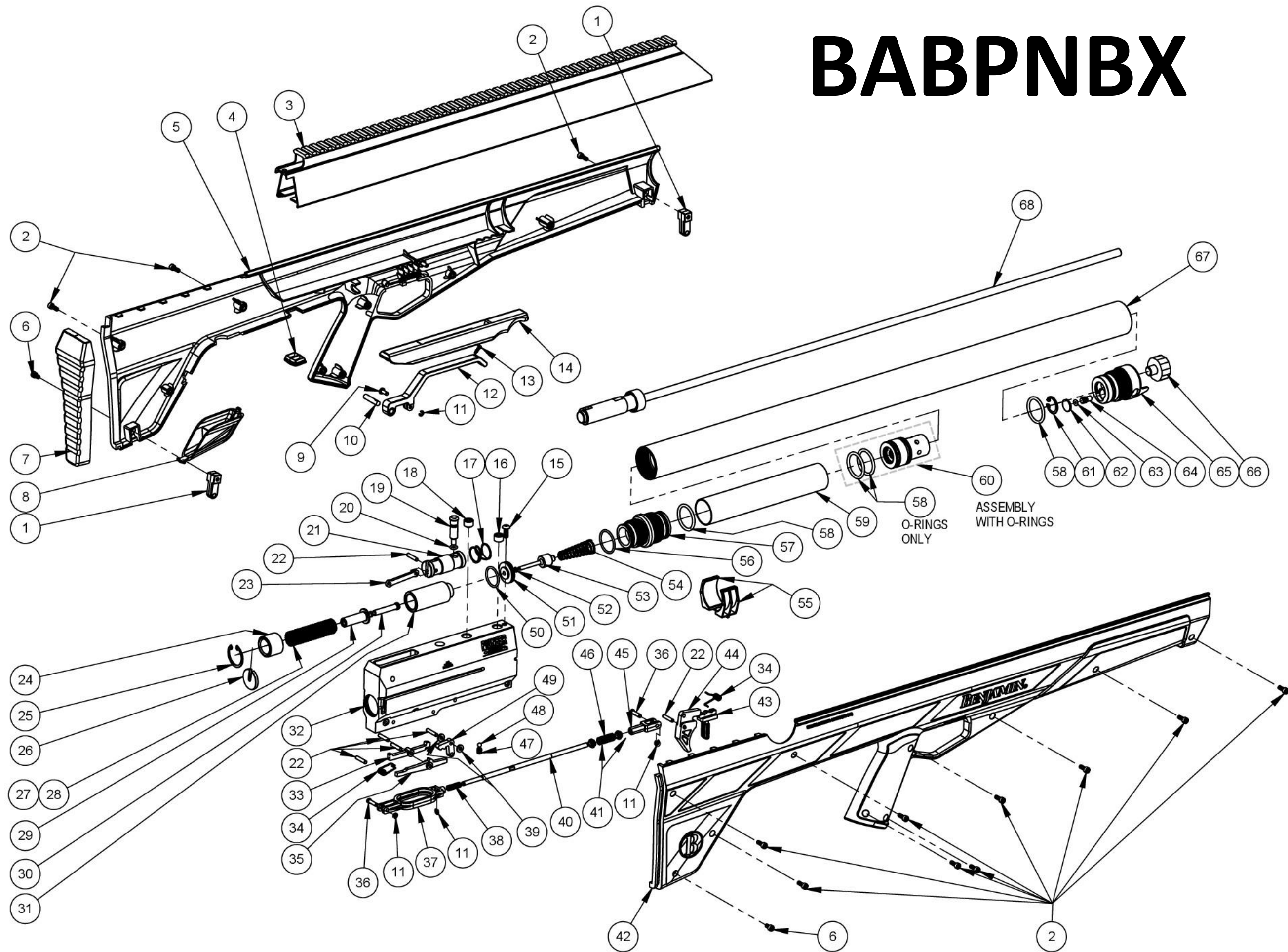
Last Update: 7/26/16

CROSMAN CORPORATION
7629 ROUTES 5 & 20
BLOOMFIELD, NY 14469
Phone: 1-800-724-7486
Parts Order Fax: 585-657-5405
www.crosman.com

- This EVP and parts list is intended to be an informational guide in ordering parts. It is not instructional material and we therefore assume no responsibility for those who use the same without proper factory training.
- Please order by part number and description.
- Check or money order for the total price must accompany the order.
- For current prices contact Crosman Corporation at 1-800-724-7486 or visit our website www.crosman.com

BABPNBX

BABPNBX



PARTS LIST

ITEM NO.	PART NUMBER	DESCRIPTION	QTY.
1	R3571-077	SWIVEL STUD	2
2	R3571-082	SCREW, 6-32 x .375, SHCS	12
3	SWF-006	Barrel Shroud	1
4	R3571-078	TRIGGER ADJUSTMENT COVER	1
5	SWF-070	Left Hand Stock Frame	1
6	R3571-081	SCREW, 6-32 x .250, SHCS	2
7	R3571-072	BUTT PAD	1
8	R3571-073	COVER, FILL NIPPLE	1
9	R3571-017	PIN, BOLT LINK	1
10	SWF-414	Handle Pivot Pin	1
11	R3571-055	RETAINING RING, .125"	4
12	SWF-407	COCKING HANDLE ASSY	1
13	SWF-412	Cheek Piece Mounting Screw	1
14	SWF-409	Cheek Piece	1
15	HB17-039	SCREW, #8-32 x .437, BHCS	1
16	R3571-045	SET SCREW, BARREL	1
17	SWF-411	Main Spring	1
18	R3571-046	SCREW, BARREL LOCATE	1
19	SWF-406	Hammer Pin	1
20	P15B-029	O-RING, 2-008 POLYURETHANE	1
21	SWF-405	BOLT	1
22	10804	PIN, DOWEL, .125 x .625	6
23	R3571-013	LINK, BOLT	1
24	SWF-410	Spring Guide	1
25	SWF-413	Main Spring Retention Clip	1
26	SWF-453	Main Spring Plug	1
27	SWF-455	Main Spring	1
28	SWF-454	Main Spring	1
29	SWF-451	Main Spring Seat	1
30	SWF-452	Main Spring Stem	1
31	SWF-402	Hammer	1
32	SWF-401	RECEIVER	1
33	R3571B034	SEAR, HAMMER	1
34	R3571-036	SPRING, SEAR	2
35	R3571A033	SEAR, LOWER	1
36	R3571-031	PIN, CLEVIS	2
37	R3571-030	CLEVIS, REAR	1

ITEM NO.	ITEM NO.	ITEM NO.	ITEM NO.
38	C11-541	SPRING, VALVE	1
39	SWF-416	Sear Link Spacer	2
40	R3571-027	TRIGGER ROD	1
41	R3571-028	BUSHING, TRIGGER ROD	2
42	SWF-071	STOCK FRAME, RIGHT	1
43	R3571-035	SAFETY LEVER	1
44	R3571-026	TRIGGER	1
45	R3571-029	CLEVIS, FRONT	1
46	R3571-054	SPRING, TRIGGER RETURN	1
47	R3571-092	BRASS TIP SET SCREW 10-32	1
48	R3571-091	STELL BALL 5/32	1
49	R3571A032	LINK, SEAR	1
50	E357-008	O-RING, 2-018	1
51	SWF-403	Hammer Stop	1
52	SWF-415	Valve Stem O-Ring, 1mm X 3mm	1
53	R3571-101	ASSY, VALVE STEM	1
54	R3571-037	SPRING, VALVE	1
55	R3571-079	PAD, PRESSURE TUBE	2
56	SWF-307	O-RING, #2-020	1
57	SWFA301	ADAPTER, RESERVOIR	1
58	E357-097	O-Ring, 2-119	2
59	SWF-304	Spacer Sleeve	1
60	SWF-200	1950psi Regulator Assembly	1
61	SWF-306	Check Valve Retention Clip	1
62	NS1200-047	SINTERED FILTER	1
63	130-032	Check valve O-Ring	1
64	SWF-305	Check Valve Spool	1
65	SWFA303	Reservoir Tube Cap	1
66	1763-033	GAUGE, 3000 PSI	1
67	SWFA302	TUBE, RESERVOIR	1
68	SWF-100	Barrel Assembly	1
Accessories Included			
	CR640AO-999	Scope, 6x40mm AO	1
	CPM2PW25XH-999	2pc Weaver Mnt 1" Extra High	1
	CM20MOAB-999	Base, Picrail with 20 MOA	1
	QUIV-999	Quiver, Assembly	1
	PICADT-999	Picatinny Accessory Adaptor	1
	RTDECAL	RTDECAL Assembly	1

